

freiraum



25h

munich/the royal bavarian
twenty five hours hotel

contents

- 3 overview**
- 4 packages**
- 6 extras**
- 7 freiraum function rooms**
- 12 rooms**
- 14 event ideas**
- 16 directions**
- 17 contact**

bavarians do it better.

overview

- 165 rooms
- free high-speed wifi
- schindelhauer bikes for rent
- aperitivo bar
- NENI Restaurant
- The Boilerman Bar
- muschelkammer function room
- kiosk
- sauna & gym

public areas

- aperitivo bar
- NENI Restaurant
- The Boilerman Bar



conference packages

basic package

always included

- _ seating plan according to event room
- _ smart tv
- _ bluetooth speaker
- _ flip chart
- _ pin board
- _ fruit basket
- _ free high-speed wifi

additional conference equipment
available upon request

additional equipment

prices and availability upon request

flip chart

pin board or whiteboard

CTouch smartscreen

meeting camera

beamer & screen

other equipment available upon request

daily package s

- _ standard set-up and equipment
- _ water included with lunch and in the conference room
- _ 1 coffee break
(in the morning or afternoon):
 - _ tea & coffee
 - _ snacks
 - _ fruit
- _ neni lunch, based on the chef's choice

eur 76 per person per day

daily package m

- _ standard set-up and equipment
- _ water included with lunch and in the conference room
- _ 1 coffee break in the morning:
 - _ tea & coffee
 - _ snacks
 - _ fruit
- _ neni lunch, based on the chef's choice
- _ 1 coffee break in the afternoon:
 - _ tea & coffee
 - _ snacks
 - _ fruit

eur 84 per person per day

**bavarians
do it better.**



25h
munich/the royal bavarian
twenty five hours hotel

muschelkammer

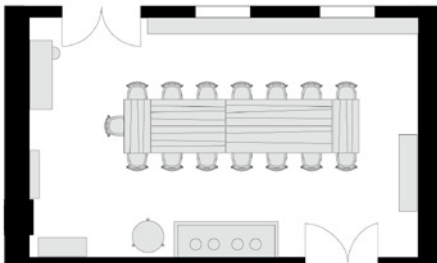


overview

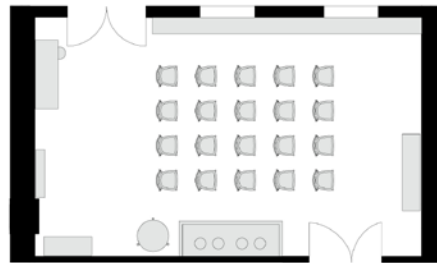
The Muschelkammer function room is the name of the meeting room which exudes Bavarian charm in the style of a cosy alpine hut. Here you can admire some of the shell-type details that are typically found in the great 'Muschelsaal' halls of Bavarian castles and in the Augustiner Brewery. The highlight: the room contains a copper vat into which ice falls frequently, keeping the beer it holds at the perfect drinking temperature of 7°C. If you prefer, we can of course replace the beer with soft drinks and alcohol-free beer.

facts

size	room capacity [max. capacity]	equipment
<ul style="list-style-type: none">40qm8,3 x 4,5 x 2,5m (l x b x h)	<ul style="list-style-type: none">block [12 people]seating rows [20 people]	<ul style="list-style-type: none">daylightair conditioning



block [12 people]



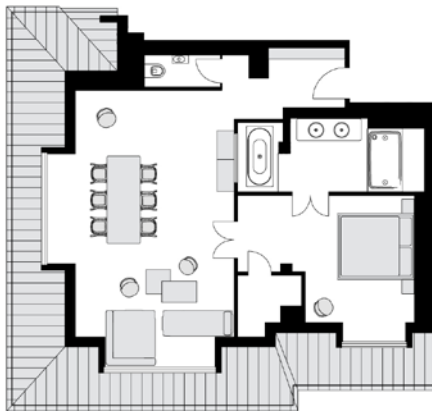
seating rows [20 people]

room rental

from eur 500 for a half day (up to 4 hours)
from eur 750 for a full day

peacock suite

7



peacock suite

overview

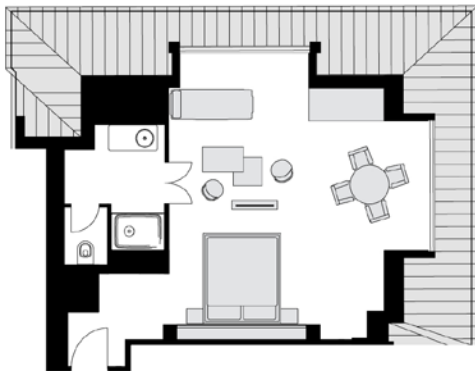
The generously appointed, 73 sqm peacock suite is a haven of wellbeing. With a separate living area and bedroom, as well as an en-suite bathroom, this room is the perfect place for meetings. The cosy living area is furnished with a table for six and a sofa corner. The Nespresso coffee maker and the samova tea station will keep you feeling energised. An incomparable view of Munich's vibrant city centre through to the distant mountains perfectly rounds off the features of the peacock suite.

facts

size	room capacity [max. capacity]	equipment
– 73qm	– meetings, group work, photoshoots etc [6 people]	– daylight – separate bedroom – living area with nespresso coffee maker – en-suite bathroom (separate) – air conditioning

room rental
from eur 600 for a half day (up to 4 hours)
from eur 950 for a full day

swan suite



swan suite

overview

At 46 sqm in size, the swan suite is ideal for special occasions and small meetings, as it provides plenty of space and that little bit of luxury. The name says it all, as majestic swans are depicted in various features of the design. The living area, which features a combined living and sleeping area, has a 4-person table and provides for lively exchanges. For a quick pick-me-up throughout the day, you will find the Nespresso coffee maker, which is available to guests free of charge, as well as high-speed WiFi.

facts

size	room capacity [max. capacity]	equipment
– 46qm	– meetings, group work, photoshoots etc [4 people]	– living area with nespresso coffee maker – daylight – air conditioning
room rental	from eur 300 for a half day (up to 4 hours) from eur 500 for a full day	

Boilerman Bar



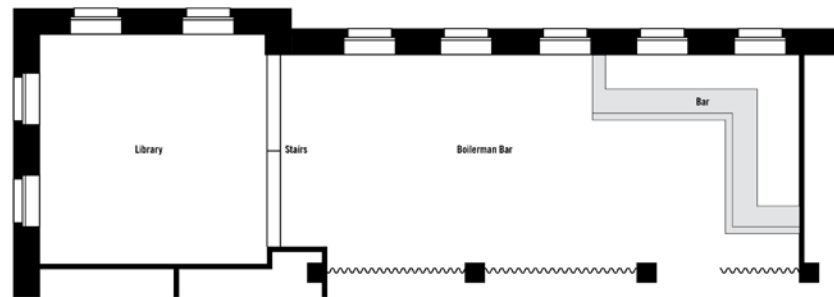
overview

Our Boilerman Bar is ideal for informal meetings or events. The cosy atmosphere makes it an inviting place to linger and relax. If you fancy a bite to eat, you can enjoy our meze buffet from the NENI Restaurant.

Boilerman Bar and library together

The Boilerman Bar and our Library can also be booked jointly for private functions. The venue is ideal for laid-back corporate events or private celebrations. A meze buffet from the NENI restaurant is available for the perfect breaktime snack

facts

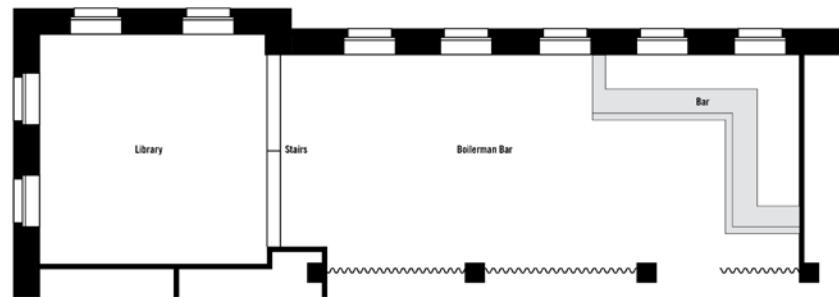


Boilerman Bar

size	room capacity [max. capacity]	equipment
— 135sqm	— get-together, brainstorming, party, business event [85 people] — exclusive rental with library on request [max. capacity 120 people]	— conference technology on request and availability

room rental eur 5.000 - 6.500

bibliothek



Boilerman Bar

overview

The Boilerman Bar's library on the first floor is the perfect place for smaller get-togethers, events or meetings. The meze buffet from the NENI restaurant can be enjoyed in the library's cosy atmosphere. In a cozy atmosphere, our meze buffet from the NENI Restaurant can be consumed.

Boilerman Bar and library together

Our Boilerman Bar and the library can also be booked jointly for private functions. The venue is ideal for laid-back corporate events or private celebrations. A meze buffet from the NENI restaurant is available for the perfect brektime snack.

facts

size	room capacity [max. capacity]	equipment
— 35sqm	— get-together, brainstorming [35 people] — exclusive rental with Boilerman Bar on request	— conference technology on request and availability

room rental eur 2.500 per evening

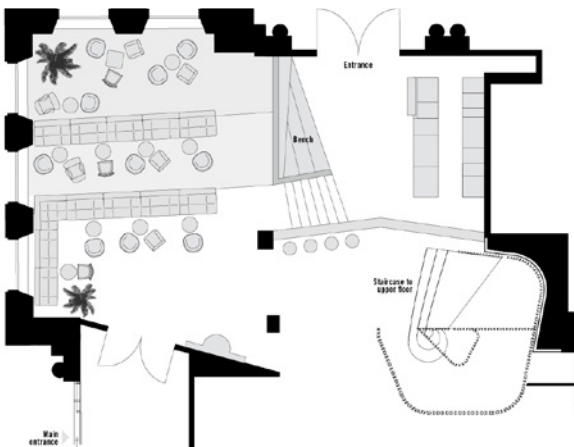
aperitivo bar



overview

Our aperitivo bar recalls the splendours of the botanical gardens and the Royal Greenhouses. Sat on our comfy sofa stairs between exotic plants, you will experience real wanderlust at NENI Food. The aperitivo bar is the best place for get-togethers or relaxed dining events. Typically NENI, the food is served Balagan style (meaning positive chaos). The area is available for private functions from 7pm daily.

facts



NENI deli

size

— 102spm

room capacity
[max. capacity]

— get together,
brainstorming
[30 people]

equipment

— daylight
— air conditioning

minimum spend

eur 2.500

rooms

small

- _ 18sqm
- _ single bed (120 cm)
- _ air conditioning
- _ free high-speed wifi
- _ ue boom bluetooth speaker
- _ canvasco bag



medium

- _ 18sqm
- _ queen size bed (160 cm)
- _ air conditioning
- _ free high-speed wifi
- _ ue boom bluetooth speaker
- _ canvasco bag



large

- _ 20-24sqm
- _ king size bed (180 cm), queen size bed (160 cm) or twin beds (2 x 90cm)
- _ air conditioning
- _ free high-speed wifi
- _ bathroom with rain shower
- _ ue boom bluetooth speaker
- _ canvasco bag



rooms

extra large

- _ 30sqm
- _ king size bed (180 cm)
- _ air conditioning
- _ free high-speed wifi
- _ bathroom with rain shower
- _ ue boom bluetooth speaker
- _ FREITAG bag
- _ samova tea station
- _ enough space for a small family
- _ personal in room schindelhauer bike

swan suite

- _ 46sqm
- _ king size bed (180 cm)
- _ living area with samova tea & coffee station
- _ air conditioning
- _ free high-speed wifi
- _ bathroom with rain shower
- _ ue boom bluetooth speaker
- _ FREITAG bag
- _ enough space for a small family
- _ free mini and schindelhauer bike rental

peacock suite

- _ 73sqm
- _ king size bed (180 cm)
- _ living area with samova tea & coffee station
- _ air conditioning
- _ free high-speed WiFi
- _ bathroom with tub and rain shower
- _ UE Boom Bluetooth Speaker
- _ FREITAG bag
- _ enough space for a small family
- _ free mini and schindelhauer bike rental



event ideas

pop-up

The patterns have been returned to the drawers, the sewing machine is now gathering dust. And the most important thing: The first collection is ready to wear. Before you take it to Milan, Paris, or London, how about your own pop-up at one of our 25hours Hotels? Even the biggest designers started small and unconventionally and presented their pieces to the public. Or is there a new product launch in the pipeline? Thanks to our locations in the major cities in Germany, Austria, and Switzerland, the potential customer base is already present and won't miss your pop-up.



press conference

Your press appearance really needs to make waves? To do this, not only the product has to be right, but also the venue. At our 25hours Hotels in Germany, Austria, and Switzerland, we offer personalised solutions for the perfect setting. Classic conference rooms with seating, cosy lounges with a fireplace or a panoramic view over the city - whatever suits your product or target groups best, we'll work together to host the perfect press conference.



product launch

From lip balm, to the new novel series, right up to sports cars packed with horse power - good ideas need effective launches in order to have a successful start on the market. The 25hours locations are as diverse as the products unique. Be it big and grandiose or cosy and small - do you already have a brilliant idea and your breakthrough is within reach? Maybe you still need a little inspiration.



assessment centre

Let's get down to business. Which of the applicants is potentially the right candidate for a management role? Individual or group assessments, management audits, or an evaluation assessment centre - when discretion has the top priority, we're the right choice. Even just for a cosy get-together at one of our restaurants or bars - there is a personalised solution for all kinds of requests. And the possibilities are endless at the 25hours Hotels.



event ideas

album release

The new album: Check! The big day is here. Now, the big wide world should listen and recognise the true artisty. We have exactly the right locations for this - be it cosy and intimate or big and fabulous. For twenty, a hundred, or even hundreds of listeners. With a live set or a sound system with bass tubes and the perfect sound. We even have instruments available on site at some hotels. Just do your thing and win the audience over with your new album. We have everything you need and the perfect spaces for a flawless release party.



casting

Your company is in its infancy and your new offices aren't ready yet? We would be happy to provide our rooms for castings and recruitment interviews. Whether it's on a small scale or somewhat larger. Be it individual hotel rooms, the lobbies, bars, or restaurants - we have the right venue for any casting event. Just click through to have a look or come and visit us in person. Many rooms can be adjusted as required to meet your exact needs.

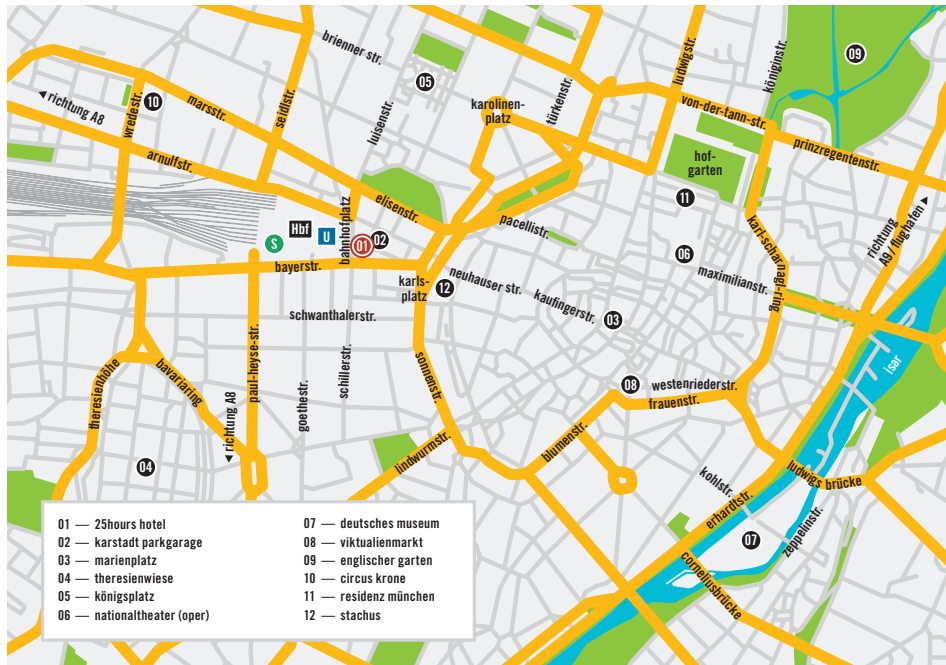


fotoshooting

The new lookbook for the coming season needs to be shot? The next edition of the magazine has a feature on Berlin? Zurich or Hamburg? The photographer is booked, but the matter of the right location hasn't been resolved? Our 25hours Hotels, with their individual hotel concepts, offer tailored spaces for photoshoots with a passion for detail. Whether it's in a bathtub with a view over the Vienna MuseumsQuartier, on the roof terrace at the 25hours Hotel Bikini Berlin with a view of chimpanzees and elephants, or in the colourful, urban world of the 25hours Hotel Frankfurt The Goldman in Frankfurt's east end. Our hotels are as diverse as the fashion and culture themselves.



how to find us



arriving on public transport

From Munich Airport:

The S-Bahn commuter rail lines S1 and S8 go to Munich Central Station. Get off at Munich Central Station and leave the building toward the city centre. The hotel is located opposite the exit at Bahnhofplatz 1.

arriving by car

Travelling from the north:

Follow the A9 toward Munich/Stuttgart / Lindau. Exit the motorway at the Junction 76 Munich and head toward Schwabing /Innenstadt. Follow the signs toward Innenstadt/Hauptbahnhof.

Travelling from the south:

Follow the A95 toward Munich /Augsburg /Oberammergau. Continue onto the B2R. Stay left and continue onto the B2 toward Stuttgart/Zentrum/A8. Then follow the signs toward Innenstadt/Hauptbahnhof.

The hotel is located opposite Munich Central Station at Bahnhofplatz 1.

We recommend using one of the car parks in the area.

contact

25hours hotel the royal bavarian
bahnhofplatz 1
80335 munich

p +49 89 90 40 01 260
events.royalbavarian@25hours-hotels.com